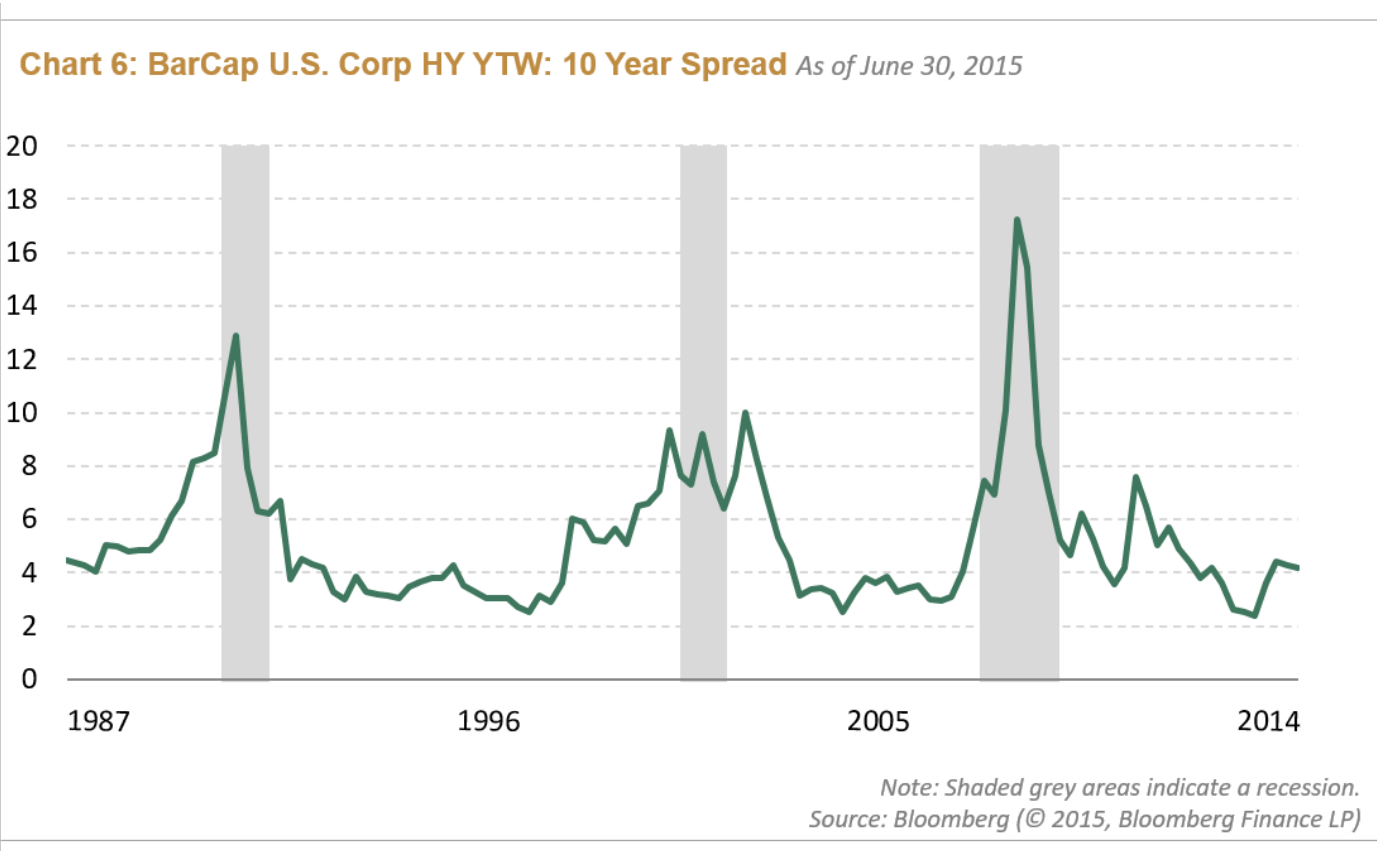


# No Boom, No Bust: Part II

*This is the second post in my three-part series on the recessionary cycle and its leading indicators.*

Market Signals  
High Yield Spreads

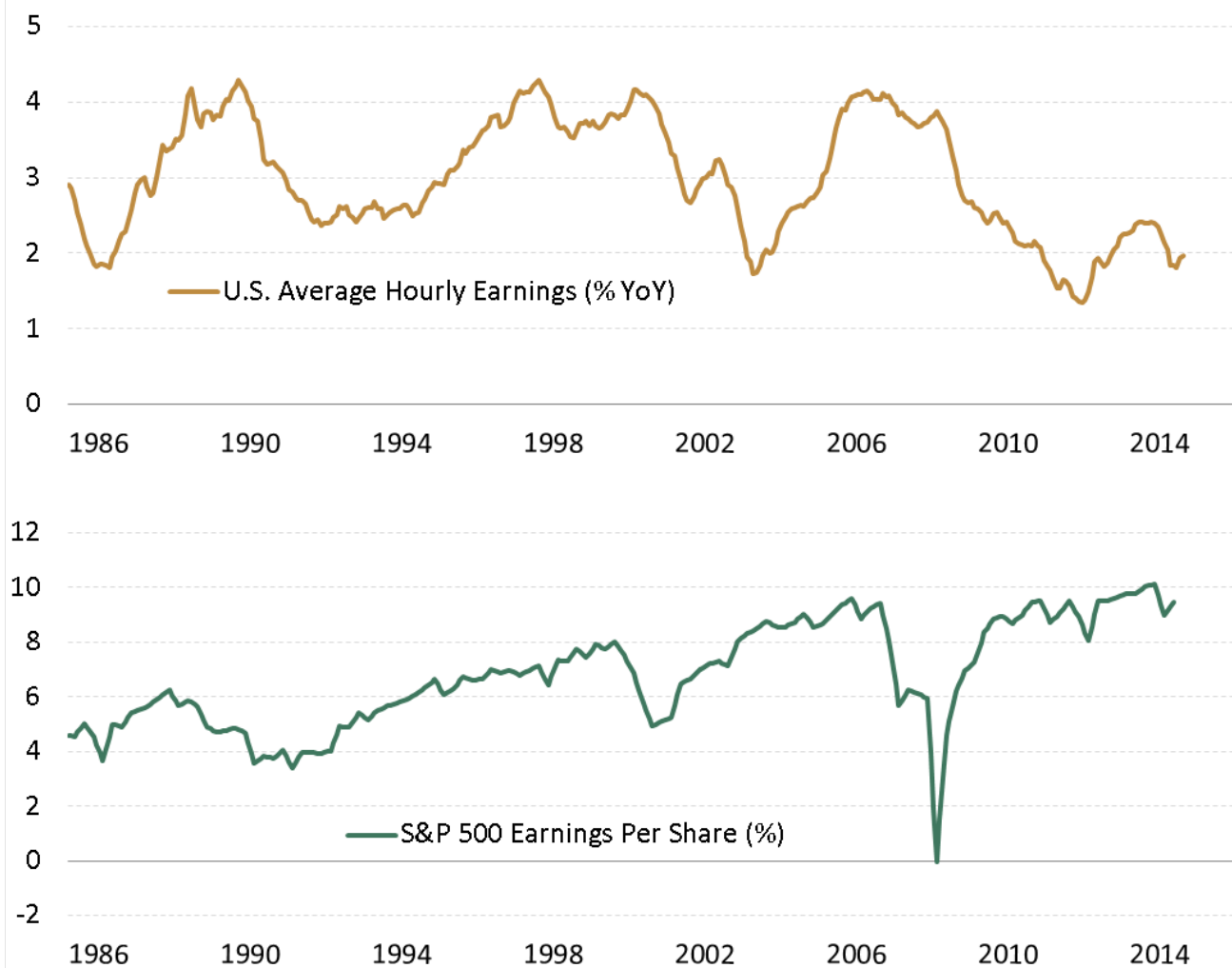
High yield corporate bond spreads are often regarded as reliable signals for a recession in the U.S. economy. In recent history, a spike in high yield spreads has either preceded or coincided with economic recession, as shown in [Chart 6](#). Currently, there is no apparent stress in the corporate market.



Labor Market Indicators

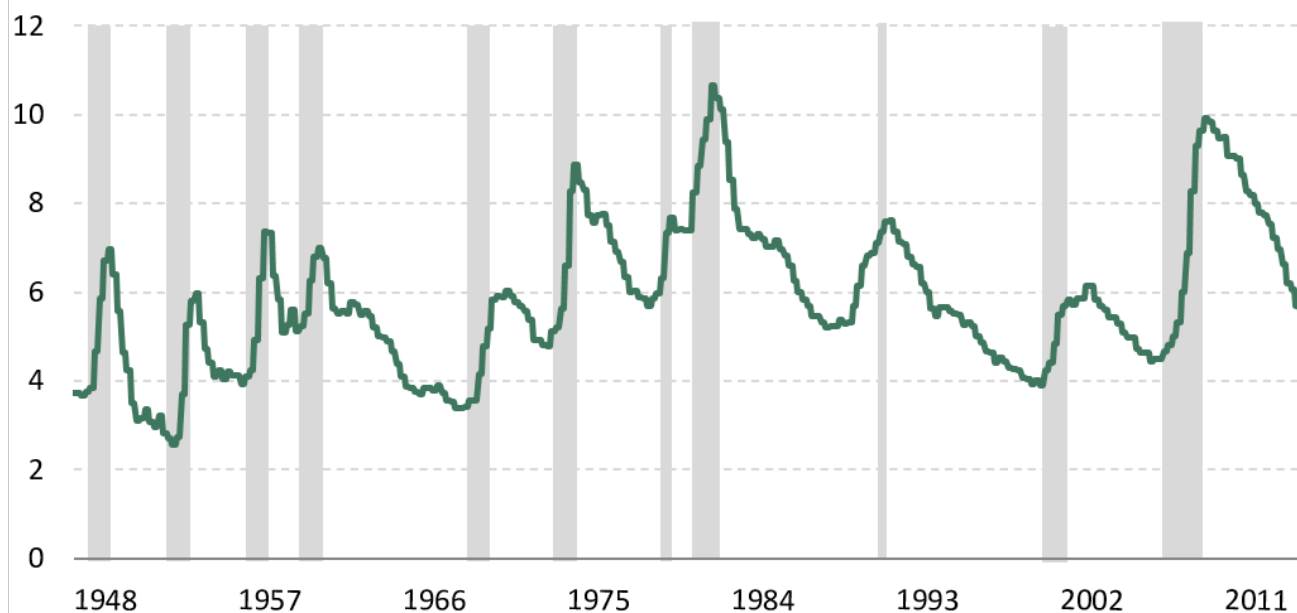
In recent decades, business cycle expansion typically peaked when U.S. average hourly earnings accelerated to 4%, while the unemployment rate fell to below 5% (see [Chart 7](#) and [Chart 8](#)). These series, like any other economic data, are simply indicative of the boom-bust nature of the economy and tell us that a boom usually peters out when income growth and the unemployment rate reach certain threshold levels.

**Chart 7: Avg. Hourly Earnings & S&P 500 Operating Margins** *As of March 31, 2015*



Source: Thomson Datastream

**Chart 8: U.S. Unemployment Rate %; As of June 30, 2015**



*Note: Shaded grey areas indicate a recession.  
Source: Bloomberg (© 2015, Bloomberg Finance LP)*

The wage rate currently remains very subdued, and any pickup in hourly earnings should be viewed in a positive light. So far, consumers continue to refuse taking on new debt, and therefore are confining their spending to the natural rate of income growth. Substantial time is needed before income and spending can reach the levels typical of a cyclical top.

The unemployment rate, however, is rapidly approaching levels that are usually indicative of Fed monetary tightening. However, the rapid fall in the unemployment rate could be deceptive because the decline occurs against the backdrop of a very depressed participation rate. The U-6 unemployment rate—which includes part-time workers—still stands at 10.8%, compared to previous bottoms of 6.9% and 8.0% in 2000 and 2007, respectively.

#### Global Reserves

Fluctuations in global non-gold reserves often signal what is going on in the world economy, mainly because global official reserves not only form high-powered money for the rest of the world economy, but are also closely linked to trade flows which are highly sensitive to global business cycles. A sharp decline in global reserves growth almost always indicates a steep downturn in global trade or a growth slump in the world economy, as shown in [Chart 9](#) below:

**Chart 9: Global Liquidity Supply** *Annual % Change; As of June 14, 2015*



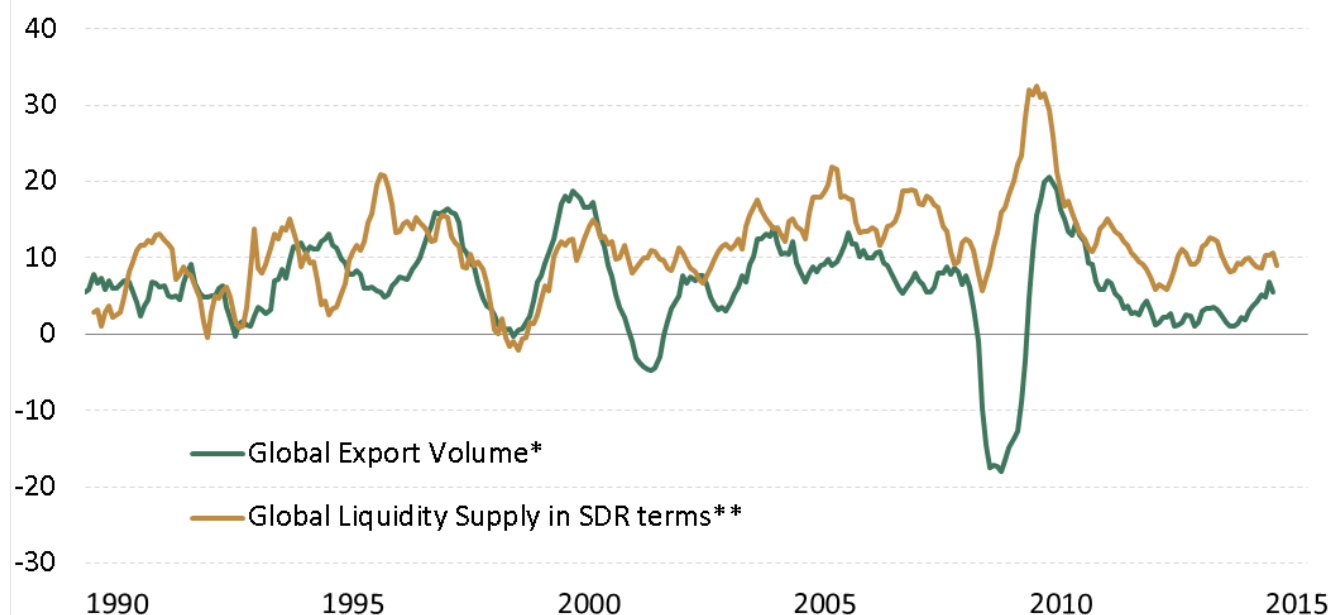
*Source: Thomson Datastream*

I believe some caution is warranted here. Since global reserves are linked with trade, their fluctuations are strongly influenced by two factors: trade volume and the U.S. dollar's valuation. A global trade boom and/or a major decline in the dollar could result in a strong surge in global reserves. Similarly, a global trade slump and/or a strong dollar could produce a major down cycle in global reserves. Prior to the 2000s, when the emerging world was mostly pegged to the U.S. dollar, a surge in the dollar often led to inadvertent monetary tightening, economic contraction, and financial crises in the developing world.

Global reserves have gone through a major deceleration since 2014—even contracting recently. The deceleration primarily reflects the sharp gain in the dollar since late 2014. Of course, global trade has also weakened as a result of the euro-zone crisis and a sharp slowdown in Chinese investment demand, but not yet to the extent of signaling an impending recession in the developed world.

Chart 10 shows that global reserves in special drawing rights (SDR) terms continue to expand, which is consistent with global export growth in volume terms. Note that SDR are foreign-exchange reserve assets with a valuation based on a basket of currencies selected by the International Monetary Fund. Of course, global reserves and SDR have declined sharply from the levels seen in 2010-2012, suggesting that the world economy has been reset at a new, albeit greatly reduced pace.

**Chart 10: Global Liquidity Supply and Export Volume** *Annual % Change; As of March 31, 2015*



*\*Source: IMF; shown as 3-month moving average*

*\*\*Non-gold, international reserves plus Fed's holdings of U.S. securities*

*Source: Thomson Datastream*

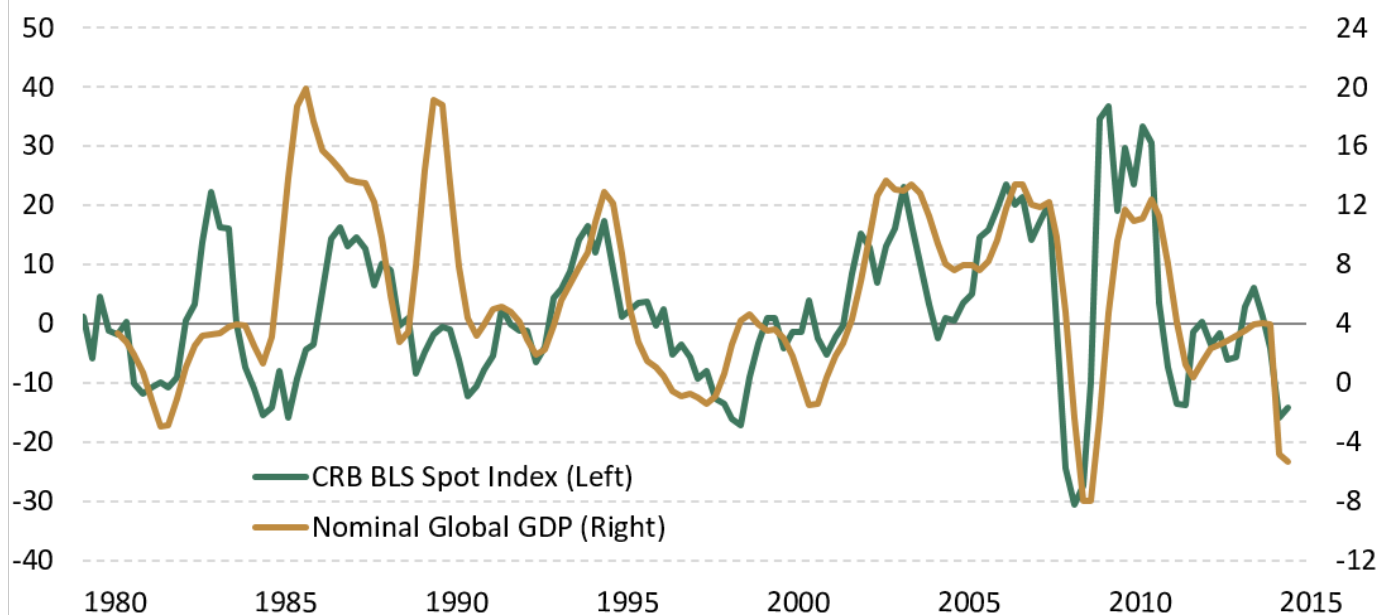
### Commodity Research Bureau (CRB) Index

Commodity prices are a coincident indicator for global manufacturing cycles. On average, a 30% fall in the CRB index is consistent with a contraction in global manufacturing and trade. However, it is useful to separate a global manufacturing contraction from broad-based economic recession. Although global recession must come with trade and manufacturing contraction, the opposite is not necessarily true. In other words, it is possible to have a global trade and manufacturing contraction without a broad-based recession.

The CRB index has dropped 40% since 2011, due to the combination of a strong dollar and sharp deceleration in global nominal growth from the rapid recovery of 2009-2010, (see [Chart 11](#) below). The latest downturn in the CRB index since 2014 is related to the impact of the strong dollar, although global manufacturing and trade have stayed subdued as well.

Regardless, the behavior of the CRB index is consistent with global manufacturing recession or trade stagnation. Any significant decline from its current levels should be read as a warning signal that the major economies of the world are slipping into broad-based recession.

**Chart 11: Global GDP Growth & Commodity Price** Annual % Change; As of June 30, 2015



Source: Bloomberg (© 2015, Bloomberg Finance LP) and Thomson Datastream

*Groupthink is bad, especially at investment management firms. Brandywine Global therefore takes special care to ensure our corporate culture and investment processes support the articulation of diverse viewpoints. This blog is no different. The opinions expressed by our bloggers may sometimes challenge active positioning within one or more of our strategies. Each blogger represents one market view amongst many expressed at Brandywine Global. Although individual opinions will differ, our investment process and macro outlook will remain driven by a team approach.*

©2024 Brandywine Global Investment Management, LLC. All Rights Reserved.

#### Social Media Guidelines

Brandywine Global Investment Management, LLC ("Brandywine Global") is an investment adviser registered with the U.S. Securities and Exchange Commission ("SEC"). Brandywine Global may use Social Media sites to convey relevant information regarding portfolio manager insights, corporate information and other content.

Any content published or views expressed by Brandywine Global on any Social Media platform are for informational purposes only and subject to change based on market and economic conditions as well as other factors. They are not intended as a complete analysis of every material fact regarding any country, region, market, industry, investment or strategy. This information should not be considered a solicitation or an offer to provide any Brandywine Global service in any jurisdiction where it would be unlawful to do so under the laws of that jurisdiction. Additionally, any views expressed by Brandywine Global or its employees should not be construed as investment advice or a recommendation for any specific security or sector.

Brandywine Global will monitor its Social Media pages and any third-party content or comments posted on its Social Media pages. Brandywine Global reserves the right to delete any comment or post that it, in its sole discretion, deems inappropriate or prevent from posting any person who posts inappropriate or offensive content. Any opinions expressed by persons submitting comments don't necessarily represent the views of Brandywine Global. Brandywine Global is not affiliated with any of the Social Media sites it uses and is, therefore, not responsible for the content, terms of use or privacy or security policies of such sites. You are advised to review such terms and policies.